

# DVF Series

## Features

### Standard Design Features

- 1 150 psi (10.34 bar) welded steel ASME Code construction. (stamp on request)
- 2 Epoxy coated interior, primed exterior.
- 3 Swing bolt closure with nitrile cover seals.
- 4 Inlet/Outlet sample ports
- 5 Hydraulic lifting davit<sup>1</sup>

### Options

- 6 Automatic air eliminator
- 7 Pressure relief valve
- 8 Differential pressure gauge
- 9 Drain Valve(s)
- 10 Choice of micron rating from 2 to 25 microns.
- 11 Choice of pleated or depth type media.



1. DVF16 and DVF20 Series vessels have flat covers. DVF16 Series vessels do not have hydraulic lift jacks.

# DVF Series

## Specifications

Figure 1

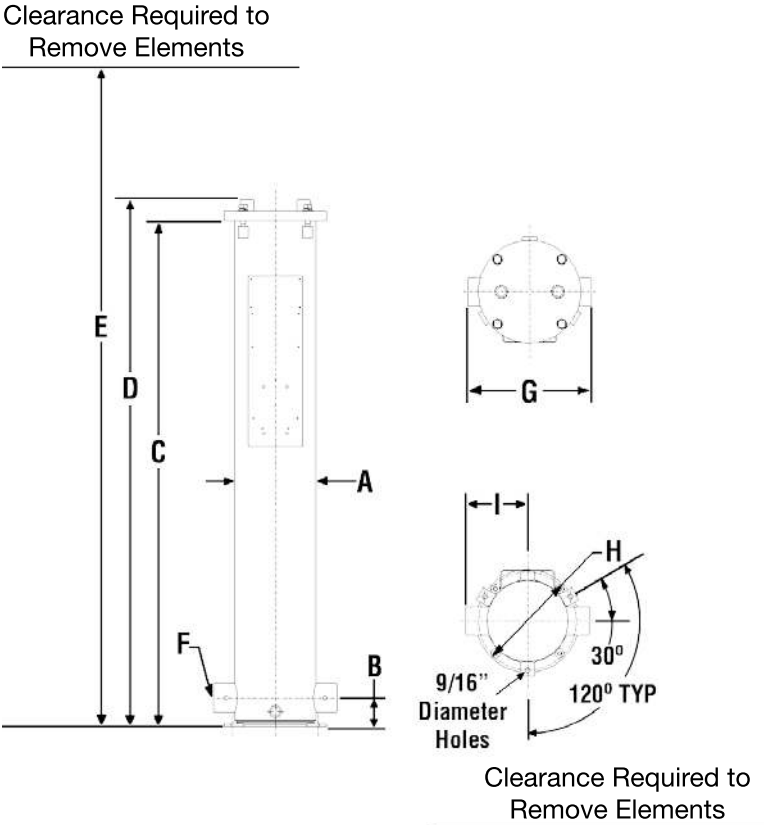
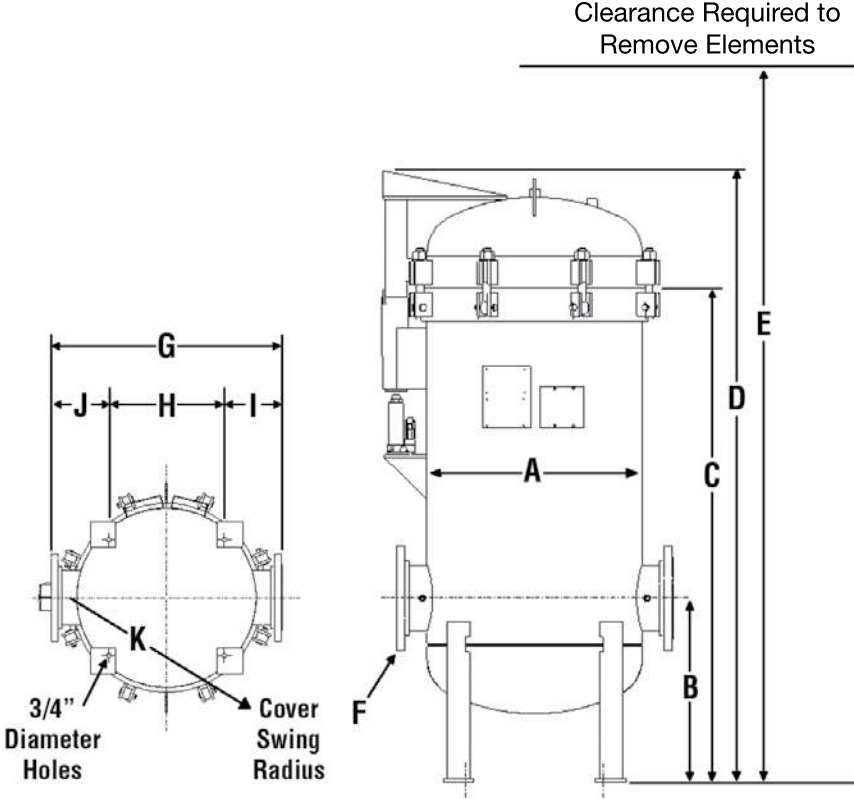


Figure 2



# DVF Series

## Specifications

Model	Flow Rate Range gpm (lpm)			Length in (mm)	Qty of Elements	Fig. No.	Dimensions in (mm)		
	Max	Target	Fuel Processed Per Filter Change (US Gallons)				A	B	C
DVF829	116 (439)	65 (247)	50000	29 (737)	1	1	8.63 (219)	3 (76)	57.06 (991)
DVF844	176 (665)	99 (375)	75000	44 (1118)	1	1	8.63 (219)	3 (76)	57.06 (1449)
DVF1629	464 (1756)	261 (988)	200000	29 (737)	4	1	16 (406)	15 (381)	52.81 (1341)
DVF1644	704 (2665)	396 (1499)	300000	44 (1118)	4	1	16 (406)	15 (381)	66.75 (1695)
DVF2044	1056 (3997)	594 (2248)	450000	44 (1118)	6	1	20 (508)	19.5 (495)	74.63 (1895)
DVF2444	1408 (5329)	792 (2998)	600000	44 (1118)	8	2	24 (610)	21 (533)	65 (1651)
DVF2456	1792 (6783)	1008 (3815)	770000	56 (1422)	8	2	24 (610)	21 (533)	77 (1956)
DVF2844	2112 (7994)	1188 (4497)	900000	44 (1118)	12	2	28 (711)	24 (610)	64.38 (1635)
DVF2856	2688 (10174)	1512 (5723)	1110000	56 (1422)	12	2	28 (711)	24 (610)	76.38 (1940)
DVF3644	3168 (11991)	1782 (6745)	1400000	44 (1118)	18	2	36.63 (930)	26 (660)	64.38 (1635)
DVF3656	4032 (15261)	2268 (8584)	1700000	56 (1422)	18	2	36.63 (930)	26 (660)	76.38 (1940)
DVF4244	4752 (17986)	2673 (10117)	2000000	44 (1118)	27	2	42.75 (1086)	28 (711)	66 (1676)
DVF4256	6048 (22892)	3402 (12877)	2600000	56 (1422)	27	2	42.75 (1086)	28 (711)	78 (1981)
DVF4856	7392 (27979)	4158 (15738)	3100000	56 (1422)	33	2	48 (1219)	29 (737)	80 (2032)

Model	Dimensions in (mm)								Wt. w/Skid lbs (kgs)	Volume US gal (litr.)
	D	E	F	G	H	I	J	K		
DVF829	41.13 (1045)	68 (1727)	2 (51)	13 (330)	10.38 (264)	6.5 (165)			265 (120)	8 (30)
DVF844	59.44 (1510)	101 (2565)	2 (51)	13 (330)	10.38 (264)	6.5 (165)			305 (138)	11 (42)
DVF1629	55.81 (1418)	82 (2083)	4 (102)	24.25 (616)	9 (229)	7.63 (194)	7.63 (194)	18.44 (468)	560 (254)	35 (132)
DVF1644	69.75 (1772)	110 (2794)	4 (102)	24.25 (616)	9 (229)	7.63 (194)	7.63 (194)	18.44 (468)	620 (281)	50 (189)
DVF2044	80.44 (2043)	118 (2997)	6 (152)	28 (711)	13 (330)	7.5 (191)	7.5 (191)	26 (660)	1100 (499)	90 (341)
DVF2444	72 (1829)	112 (2845)	6 (152)	32 (813)	15 (381)	8 (203)	8 (203)	32 (813)	1300 (590)	120 (454)
DVF2456	84 (2134)	122 (3099)	6 (152)	32 (813)	15 (381)	8 (203)	8 (203)	32 (813)	1350 (612)	150 (568)
DVF2844	79.75 (2026)	108 (2743)	8 (203)	36 (914)	18 (457)	9 (229)	9 (229)	35 (889)	1600 (726)	165 (625)
DVF2856	91.75 (2330)	120 (3048)	8 (203)	36 (914)	18 (457)	9 (229)	9 (229)	35 (889)	1750 (794)	200 (757)
DVF3644	84 (2134)	109 (2769)	10 (254)	48 (1219)	23 (584)	12.5 (318)	12.5 (318)	44 (1118)	2250 (1021)	290 (1098)
DVF3656	96 (2438)	121 (3073)	10 (254)	48 (1219)	23 (584)	12.5 (318)	12.5 (318)	44 (1118)	2400 (1089)	350 (1325)
DVF4244	87.38 (2219)	110 (2794)	12 (305)	54 (1372)	28 (711)	13 (330)	13 (330)	52.25 (1327)	3800 (1724)	400 (1514)
DVF4256	98.38 (2499)	122 (3099)	12 (305)	54 (1372)	28 (711)	13 (330)	13 (330)	52.25 (1327)	4000 (1814)	475 (1798)
DVF4856	108 (2743)	165 (4191)	14 (356)	66 (1676)	36.5 (927)	14.75 (375)	14.75 (375)	65 (1651)	4400 (1996)	630 (2385)

- For higher viscosity fluids or operating in highly variable temperature conditions, consult your Parker Representative.
- DVF Series are designed to accommodate our standard 6 in. O.D., 3½ in. I.D. Elements including Parker's DFO, DI, DSO, and Aquacon AD.
- DVF16 and DVF20 Series vessels have flat covers. DVF16 Series vessels do not have hydraulic lift jacks.
- In applications where increased dirt contamination is present, it may be desirable to oversize filtration equipment. Contact Parker for oversizing recommendations.
- Actual flow rates may vary based on field conditions.
- Fuel processed is based on target flow rate and 21/18/16 ISO 4406 or 5 mg/liter incoming contamination levels. Field conditions will vary and actual results may be different than these estimates.

Dimensions shown are for estimating purposes only. For exact dimensional detail, obtain certified copy of vessel drawing.