

Accordion Style Filter Elements

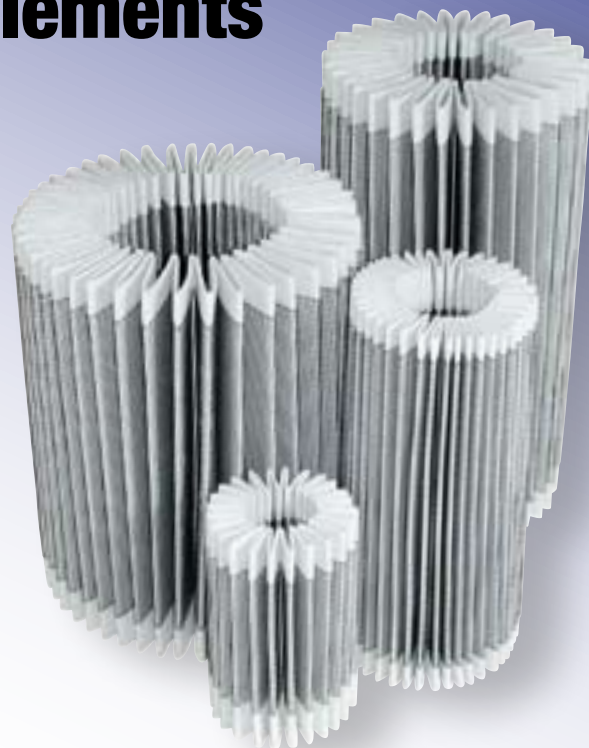


Filter element cat# 324-4610WK5
 & housing cat# A10-0125-MT-080
 w/hood removed. To order Filter
 Housings that accept accordion style
 filter elements go to page 17.

- Interchange
w/Original Equipment
- Superior Quality
- Longer Life
- Lower Cost
- Rugged Polyester Media
- Significant Savings
- Includes PreFilter Wrap
- Spray Washable

Sparks™ Filters accordion style filter elements have no rigid center core, and are stretched to fit over a fixed perforated center tube of the filter housing. They provide rugged duty air inlet protection for engines, compressors, blowers, and other major air handling devices... with high efficiency, and low ΔP. Their 4x4 woven wire support screen is outstanding in pulsating flow services.

Our filter elements directly replace the OEM accordion style filters on industrial blowers, engines, compressors, turbines, and other air/gas handling equipment. We use 100% polyester felt filter media, and unlike others, we pleat to the full original fin depths for up to 33% longer life! Our support wire is woven to width for the standard sizes of elements, eliminating seal damage. Each is supplied complete with pre-filter blanket and installation strap.



AccordionStyle

To install, these filters are stretched over and around a perforated metal cylinder that is a permanent part of the filter housing. Sealing depends upon permanent gaskets at the base of the housing, and in the hood or on the plate cover. Accordion elements are inexpensive relative to their size and area. We also offer rubber molded end style elements that substitute in replacement for the common accordion versions.

OEM Cat #	OEM Brand	Sparks™Cat#
03606283-0001	Joy	324-4610WK5
03606283-0002	Joy	324-4616WK5
03606283-0003	Joy	324-4607WK5
03606283-0004	Joy	324-4604WK5
03606283-0007	Joy	324-4609WK5
03606283-0014	Joy	324-4601WK5
03606283-0015	Joy	324-4602WK5
1-104-405-003	Cooper Engy.	324-4605WK5
1-104-405-004	Cooper Engy.	324-4632WK5
1-104-405-005	Cooper Engy.	324-4608WK5
1-104-405-006	Cooper Engy.	324-4603WK5
1-104-405-007	Cooper Engy.	324-4606WK5
1-104-405-008	Cooper Engy.	324-4604WK5
1-104-405-010	Cooper Engy.	324-4601WK5
1-104-405-011	Cooper Engy.	324-4609WK5
1-104-405-012	Cooper Engy.	324-4607WK5
1-104-405-013	Cooper Engy.	324-4602WK5
1-104-405-014	Cooper Engy.	324-4615WK5
1-104-405-016	Cooper Engy.	324-4614WK5
1-104-405-017	Cooper Engy.	324-4617WK5
1-104-405-018	Cooper Engy.	324-4618WK5
1-104-405-026	Cooper Engy.	324-4616WK5
103621017419	Fuller Cmpnrs	324-4616WK5
10500-826	Sunshine	324-4606WK5
10501-826	Sunshine	324-4604WK5
10502-826	Sunshine	324-4610WK5
10503-826	Sunshine	324-4601WK5
10504-826	Sunshine	324-4609WK5
10505-826	Sunshine	324-4607WK5
10506-826	Sunshine	324-4602WK5
10507-826	Sunshine	324-4615WK5
10508-826	Sunshine	324-4616WK5
10509-826	Sunshine	324-4617WK5
10510-826	Sunshine	324-4618WK5
10512-826	Sunshine	324-4614WK5
10513-826	Sunshine	324-4603WK5
11152-826	Consler	324-4606WK5
11153-826	Consler	324-4604WK5
11154-826	Consler	324-4610WK5
11155-826	Consler	324-4601WK5
11156-826	Consler	324-4609WK5
11157-826	Consler	324-4607WK5
11158-826	Consler	324-4602WK5
11159-826	Consler	324-4615WK5
11160-826	Consler	324-4616WK5
11161-826	Consler	324-4617WK5
11162-826	Consler	324-4618WK5
11463-826	Consler	324-4614WK5

OEM Cat #	OEM Brand	Sparks™Cat#
11759-826	Consler	324-4603WK5
12-370E-75	Flitr. Eng.	324-4603WK5
12-370E-76	Flitr. Eng.	324-4606WK5
12-370E-77	Flitr. Eng.	324-4604WK5
12-370E-78	Flitr. Eng.	324-4610WK5
12-370E-79	Flitr. Eng.	324-4601WK5
12-370E-80	Flitr. Eng.	324-4609WK5
12-370E-81	Flitr. Eng.	324-4607WK5
12-370E-82	Flitr. Eng.	324-4602WK5
12-370E-83	Flitr. Eng.	324-4615WK5
12-370E-84	Flitr. Eng.	324-4616WK5
12-370E-85	Flitr. Eng.	324-4614WK5
12-370E-86	Flitr. Eng.	324-4617WK5
12-370E-87	Flitr. Eng.	324-4618WK5
1760464-34	Joy	324-4615WK5
2008156	Gard. Denver	324-4606WK5
2008157	Gard. Denver	324-4604WK5
2008680	Gard. Denver	324-4610WK5
2008861	Gard. Denver	324-4601WK5
2008946	Gard. Denver	324-4603WK5
2008975	Gard. Denver	324-4606WK5
2008985	Gard. Denver	324-4607WK5
2010033	Gard. Denver	324-4609WK5
2109115	Gard. Denver	324-4615WK5
250-74000	Chicago Pneu.	324-4601WK5
3-9818197	Caterpillar-EP	324-4616WK5
320019323	Worth Comp Co.	324-4609WK5
32001982	Worth Comp Co.	324-4610WK5
32001921	Worth Comp Co.	324-4606WK5
32001922	Worth Comp Co.	324-4607WK5
32001924	Worth Comp Co.	324-4602WK5
32001925	Worth Comp Co.	324-4616WK5
35259654	Ingersoll Rd.	324-4604WK5
3606518	Joy	324-4606WK5
3606533	Joy	324-4601WK5
3606911	Joy	324-4603WK5
37046893	Ingersoll Rd.	324-4615WK5
37046901	Ingersoll Rd.	324-4606WK5
37104726	Ingersoll Rd.	324-4602WK5
37104759	Ingersoll Rd.	324-4616WK5
37104767	Ingersoll Rd.	324-4603WK5
37119534	Ingersoll Rd.	324-4610WK5
37119542	Ingersoll Rd.	324-4601WK5
37119559	Ingersoll Rd.	324-4607WK5
37119781	Ingersoll Rd.	324-4609WK5
37165263	Ingersoll Rd.	324-4604WK5
40001273	Ingersoll Rd.	324-4601WK5
410-632-003	Dresser-Rand	324-4618WK5

OEM Cat #	OEM Brand	Sparks™Cat#
55-PS-1860	Chicago Pneu.	324-4601WK5
5748-050000	Chicago Pneu.	324-4610WK5
6008210005	Endustra	324-4603WK5
6018210005	Endustra	324-4609WK5
6022210005	Endustra	324-4602WK5
6085210005	Endustra	324-4606WK5
6105210005	Endustra	324-4604WK5
6125210005	Endustra	324-4601WK5
6145210005	Endustra	324-4601WK5
6185210005	Endustra	324-4607WK5
6225210005	Endustra	324-4615WK5
6245210005	Endustra	324-4616WK5
6285210005	Endustra	324-4614WK5
6325210005	Endustra	324-4617WK5
6365210005	Endustra	324-4618WK5
681715P03	Gard. Denver	324-4615WK5
8504019	Gard. Denver	324-4610WK5
8504360	Gard. Denver	324-4606WK5
8504368	Gard. Denver	324-4606WK5
8505848	Gard. Denver	324-4601WK5
8507294	Gard. Denver	324-4604WK5
8507585	Gard. Denver	324-4615WK5
8507948	Gard. Denver	324-4607WK5
8508163	Gard. Denver	324-4618WK5
8508166	Gard. Denver	324-4614WK5
8508167	Gard. Denver	324-4617WK5
8508168, call	Gard. Denver	324-4610WK5
8508173, call	Gard. Denver	324-4601WK5
8508174	Gard. Denver	324-4616WK5
8508175	Gard. Denver	324-4609WK5
855-10-160-10	John Deere	324-4607WK5
87472X0012	DeLaval Turb.	324-4616WK5
877-20-010-02	John Deere	324-4606WK5
95212320 elem.	Ingersoll Rd.	324-4610WK5
95212353 elem.	Ingersoll Rd.	324-4607WK5
95473500 elem.	Ingersoll Rd.	324-4609WK5
95648336 elem.	Ingersoll Rd.	324-4615WK5
95701744 elem.	Ingersoll Rd.	324-4601WK5
95816369 elem.	Ingersoll Rd.	324-4604WK5
95820536 elem.	Ingersoll Rd.	324-4602WK5
95820585 elem.	Ingersoll Rd.	324-4616WK5
95820619 elem.	Ingersoll Rd.	324-4614WK5
95820841 elem.	Ingersoll Rd.	324-4603WK5
95820890 elem.	Ingersoll Rd.	324-4606WK5
990500J14	Worth Comp Co.	324-4603WK5
AMO 8	IFM	324-4603WK5
AMO 18	IFM	324-4609WK5
AMO 22	IFM	324-4602WK5

OEM Cat #	OEM Brand	Sparks™Cat#
AMO 85	IFM	324-4606WK5
AMO105	IFM	324-4604WK5
AMO125	IFM	324-4610WK5
AMO145	IFM	324-4601WK5
AMO185	IFM	324-4607WK5
AMO225	IFM	324-4615WK5
AMO245	IFM	324-4616WK5
AMO285	IFM	324-4614WK5
AMO325	IFM	324-4617WK5
AMO365	IFM	324-4618WK5
CF10-01	AIRSAN	324-4604WK5
CF12-01	AIRSAN	324-4610WK5
CF14-01	AIRSAN	324-4601WK5
CF18-01	AIRSAN	324-4609WK5
CF18A-01	AIRSAN	324-4607WK5
CF22-01	AIRSAN	324-4602WK5
CF22A-01	AIRSAN	324-4615WK5
CF24-01	AIRSAN	324-4616WK5
CF28-01	AIRSAN	324-4614WK5
CF32-01	AIRSAN	324-4617WK5
CF36-01	AIRSAN	324-4618WK5
CF8-01	AIRSAN	324-4603WK5
CF8A-01	AIRSAN	324-4606WK5
DA 8-826	Air Maze	324-4603WK5
DA 18-826	Air Maze	324-4609WK5
DA 22-826	Air Maze	324-4602WK5
DA 85-826	Air Maze	324-4606WK5
DA105-826	Air Maze	324-4604WK5
DA125-826	Air Maze	324-4601WK5
DA145-826	Air Maze	324-4610WK5
DA185-826	Air Maze	324-4607WK5
DA225-826	Air Maze	324-4615WK5
DA245-826	Air Maze	324-4616WK5
DA285-826	Air Maze	324-4614WK5
DA325-826	Air Maze	324-4617WK5
DA365-826	Air Maze	324-4618WK5
MS-8714	Nash Eng.	324-4607WK5
MS-9886	Nash Eng.	324-4609WK5
P1404040-32	Joy	324-4606WK5
PF-6820	Nash Eng.	324-4601WK5
PU-3306	Nash Eng.	324-4601WK5
SPV1111	Curtis Toledo	324-4606WK5
UMS-9886	Nash Eng.	324-4609WK5
W103030	Ingersoll Rd.	324-4609WK5
W103031A	Ingersoll Rd.	324-4607WK5
W104186A	Ingersoll Rd.	324-4604WK5
W104207A	Ingersoll Rd.	324-4601WK5
W104208A	Ingersoll Rd.	324-4601WK5
W98726	Ingersoll Rd.	324-4616WK5